

Any home can make its own clean electricity with a complete solar electric power package from AstroPower. These packages are engineered to install quickly and provide years of automatic operation. You can help reduce global pollution and lower your electric bills while watching your meter spin backwards!



- Make your own clean electricity
- Become energy independent
- Spin your meter backwards
- Reduce your utility bills

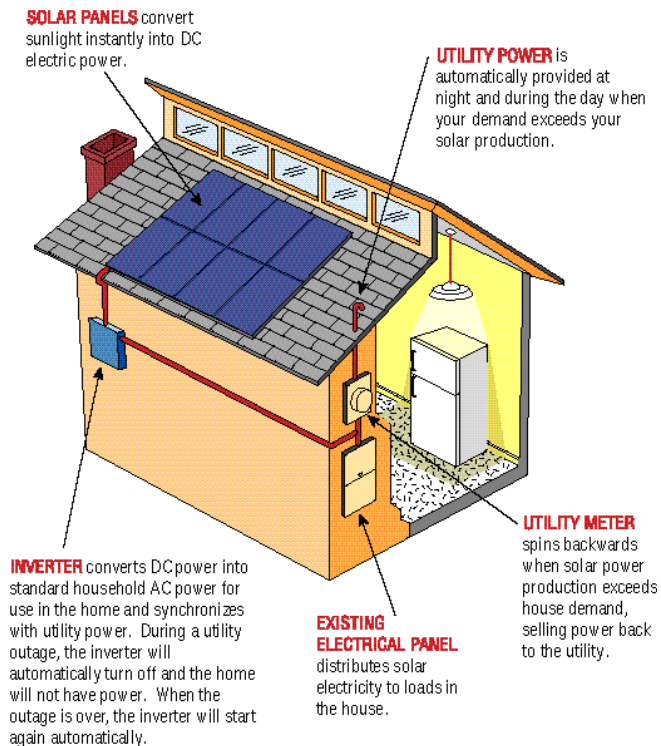


EVERYTHING YOU NEED IN ONE EASILY INSTALLED PACKAGE

All Hardware

- Solar modules with pre-installed quick connects
- Complete rooftop mounting systems
- Pre-engineered panel wiring boxes
- Inverter with disconnects and protection devices pre-wired
- Equipment meets applicable national standards

How It Works



Installation/Training Manual

- Detailed guidance throughout all phases of installation
- Step-by-step photos and illustrations
- Extensive appendices with schematics, rooftop layouts, and engineering calculations to facilitate the permitting process

All Types of Roofs

- Composite shingle, Spanish or other tile
- Post-and-flashing method for new construction or retrofits
- Engineered to withstand 125 mph wind (50 lbs/ft² equivalent)
- Tilt-up leg kit for angled mounting on flat roofs is available



Quick Connects

- Modules easily interconnect on the roof with quick connect plugs
- Eliminates the need to pre-assemble panels and do difficult under-module wiring
- Simplifies roof maintenance



Intelligent Wiring Design

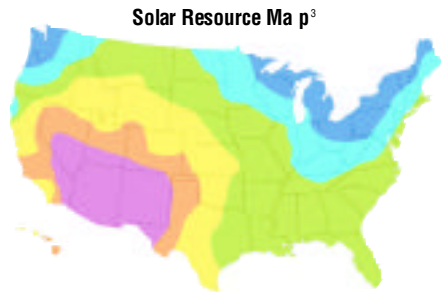
- Panel wiring boxes mount underneath modules for clean appearance
- All system wiring can be done before any modules are installed
- Makes working on rooftop easier, safer and more efficient



System Specifications and Performance

Model	SunLine-8	SunLine-12	SunLine-16	SunLine-24	SunLine-30	SunLine-42
Solar Array Rating ¹ (Watts)	880	1320	1760	2640	3300	4620
Number of Solar Modules	8	12	16	24	30	42
Number of Inverters	1 GC1000	2 GC1000	2 GC1000	3 GC1000	1 SW4048PV	1 SW5548PV
Roof Area Required (Sq. Ft.)	85	125	170	250	315	440
Percent of Residential Energy Use ²	19%	28%	38%	57%	72%	100%

SunLine™ systems do not continue operating during a utility power outage. If you are interested in backup power, refer to our SunUPS® systems literature.



Solar Resource Map³

Average Monthly Energy Production⁴ (kWh per month)

	SunLine-8	SunLine-12	SunLine-16	SunLine-24	SunLine-30	SunLine-42
Zone 1	75	110	145	220	280	395
Zone 2	85	130	170	255	325	460
Zone 3	95	145	190	285	365	520
Zone 4	105	155	210	315	400	570
Zone 5	115	175	230	345	445	625
Zone 6	125	185	250	375	480	675

1. Standard Test Conditions: Irradiance = 1000W/m²; Cell Temperature = 25 °C; Spectral Irradiance per ASTM E892. 2. Based on average annual California and New York state climate and residential electrical consumption. 3. PVGrid Computer Simulation. 4. Annual average output from inverter, 120 volt AC power, will vary ±25% depending on weather conditions. Assuming solar array faces due south, tilted to latitude angle, with no obstructions. Summer output will be greater, winter output will be less.

Solar Module

Model	AstroPower AP-110
Rated Output Power ¹	110 Watts
Solar Cell Type	High Efficiency Single Crystal Silicon
Weight Bearing Potential	50 lbs/ft ² (125 mph wind equivalent)
Hailstone Impact Resistance	1" @ 50 mph (24 mm @ 80 km/h)
Safety Certifications	UL Listed with Class C rating
Size	58.1 x 26.0 x 1.4 inches 1476 x 660 x 35 mm
Warranty	20 year limited



Power Electronics

SunLine-8, -12, -16, and -24 Systems

Inverter Model	Advanced Energy GC-1000
Maximum Continuous Output	1,000 Watts
Peak Efficiency	93%
Size	28.5 x 8.0 x 6.5 inches 724 x 203 x 165 mm
Warranty	5 year limited
Safety Certifications	UL Listed
Safety Protections	NEC required Ground Fault Protection, all AC and DC overcurrent breakers pre-wired



SunLine-30, and -42 Systems

Inverter Model	Trace Engineering SW4048PV for -30 Trace Engineering SW5548PV for -42
Maximum Continuous Output	4,000 Watts (5500 Watts for SW5548PV)
Peak Efficiency	96%
Size	28 x 30 x 12 inches 711 x 762 x 305 mm
Warranty	2 year limited (optional 5 year available)
Safety Certifications	ETL Listed to UL1741
Safety Protections	Trace SWODE enclosure with NEC required Ground Fault Protection and all AC and DC overcurrent breakers pre-wired



North American Sales and Distribution
AstroPower, 5036 Commercial Circle, Suite B
Concord, California 94520 USA
Tel 925-288-0400 Fax 925-288-0404

Corporate Headquarters
AstroPower, Solar Park
Newark, Delaware 19716-2000 USA
Tel 302-366-0400 Fax 302-368-6474

Internet www.astropower.com
E-mail sales@astropower.com
Copyright © 2000 AstroPower Inc.