



SOLAR OUTDOOR LIGHTING, INC.

STANDARD FEATURES

- UL Listed
- 2-Year System Warranty
- 20-Year Solar Panel Warranty
- Protective Solar Panel Mount
- Maintenance-Free Gel Batteries
- Five-Day Battery Reserve
- Job Specific Lamp Selection
- Technical Service 800 number

LIGHTING APPLICATIONS

- Remote Locations
- Transit Shelters
- Security-Safety Zones
- Sign lighting
- Security
- Traffic Flashers

BENEFITS

- Immune to Power Outages
- Easy Installation
 - *Modular, pre-drilled
 - *Quick connect plugs
 - *Direct burial
- No Trenching-No wiring
- No Transformers
- No Meters



SOLAR OUTDOOR LIGHTING, INC.

Solar Outdoor Lighting, Inc.

3131 SE Waaler Street

Stuart, Florida 34997

Tel: (800) 959-1329

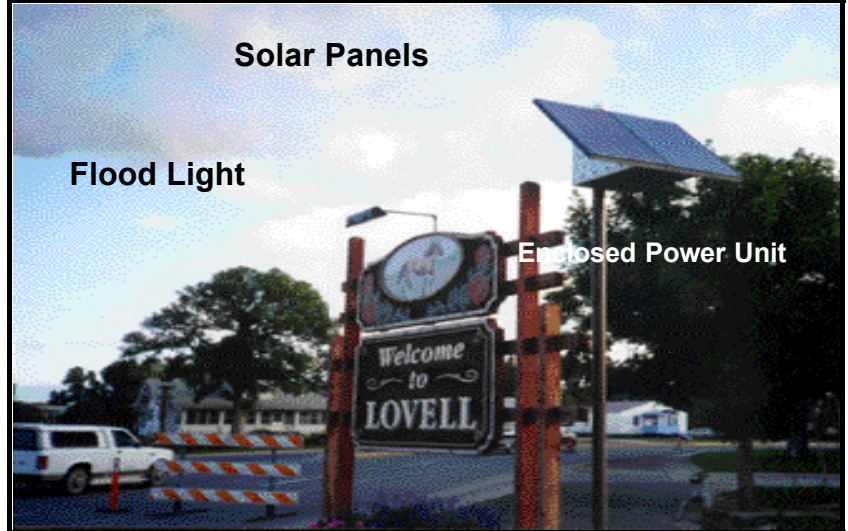
Tel: (561) 286-9461

Fax: (561) 286-9616

Email: info@solarlighting.com

Homepage: www.solarlighting.com

EPU SERIES



The EPU Series features an enclosed solar power module which can be mounted separate from the luminaire. This allows flexibility in luminaire selection and installation.

The batteries and controller are housed within a right angle shaped aluminum or galvanized steel enclosure with the solar panels forming the 45 degree side. Provided with vandal resistant, stainless steel hardware, the EPU keeps all power components out of harm's way allowing installation in high traffic areas such as transit shelters.

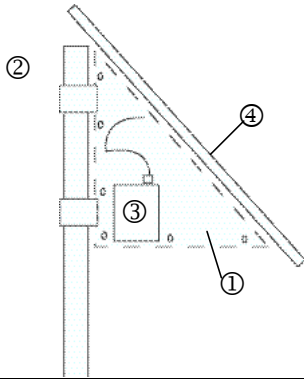
The self contained EPU does not have to be pole mounted and can be placed on top of transit shelters, remote buildings or on the ground. With such installation versatility, the EPU has a large lighting application potential.

EPU Series

Solar Power Module Specifications

Lighting system consists of Solar Power Module and luminaire. See Standard Luminaires for wide selection available.

MOUNTING BRACKET ASSEMBLY



1. Aluminum or galvanized steel enclosure.
2. Vandal resistant stainless steel hardware.
3. Batteries and controller are mounted inside enclosure.
4. Solar panels are protected by enclosure.
5. Mounts on any pole 4 inch O.D. or greater.

POWER COMPONENTS

	Single Panel	Double Panel	Triple Panel
Panel Wattage-Output Amps Solarex MSX Series	53w-3.2A 64w-3.65A 77w-4.55A 83w-4.85A	106w-6.4A 128w-7.3A 154w-9.1A 166w-9.7A	192w-10.95A 231w-13.65A 249w-14.55A
Module Dimensions (Inches)	53w-20x44 64w-20x44 77w-26x44 83w-26x44	106w-40x44 128w-40x44 154w-52x44 166w-52x44	192w-60x44 231w-78x44 249w-78x44
Batteries-Maintenance Free Gel Cell Number-Total Amp Hour Capacity	1=80 AH or 1=98 AH	2=160 AH or 2=196 AH	2=160 AH or 2=196 AH
Weight and Effective Projected Area (EPA) Weight (lb)-EPA (sq ft-sf) @ 45 Degrees	53w-160lb-4.3sf 64w-165lb-4.3sf 77w-175lb-5.6sf 83w-175lb-5.6sf	106w-265lb-8.5sf 128w-275lb-8.5sf 154w-285lb-11.2sf 166w-285lb-11.2sf	192w-285lb-12.8sf 231w-315lb-16.8sf 249w-315lb-16.8sf

CONTROLLERS

	SCU-1	Morningstar
Input Maximum Current	16 Amps	20 Amps
Load Current Maximum	20 Amps	20 Amps
Low Voltage Disconnect (LVD)	10.75 VDC	11.7 VDC
Low Voltage Reconnect (LVR)	12.35 VDC	12.8 VDC
High Voltage Disconnect (HVD)	15 VDC	N/A
Charge Stop Voltage	14.4 VDC	14.1 VDC
Dusk Set Point	VOC<4 VDC	VOC<6 VDC
Dawn Set Point	VOC>8 VDC	VOC>10 VDC